

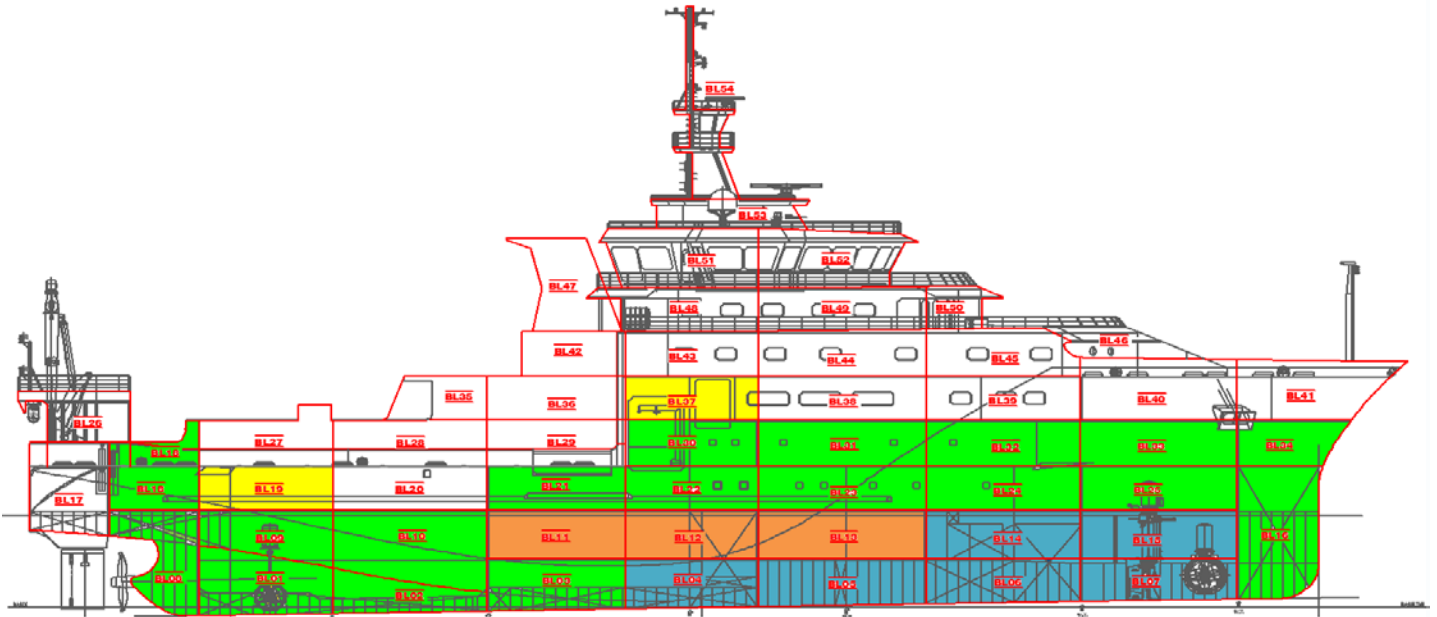
Dr. Fridtjof Nansen Replacement – Block construction

AG-460 – Hull build progress – Status by 28th May 2015

- Steel cutting
- Under construction
- Blocks ready to place on slipway
- Blocks on slipway

First steel cut: 13.01.2015

Keel Laying: 23.04.15



PLANNED BUILDING SEQUENCE OF BLOCKS– ref. Master plan Rev. 02

1	2	3	4	5	6	7	8	9	10
06 – 100%	05 – 100%	07 – 100%	14 – 100%	15 – 100%	04 – 100%	13 – 80%	03 – 65%	16 – 65%	12 – 80%
11	12	13	14	15	16	17	18	19	20
25 - 25%	02 – 70%	11 – 80%	01 - 25%	10 – 40%	09 – 40%	24 - 25%	08 - 25%	23 - 25%	22 - 15%
21	22	23	24	25	26	27	28	29	30
21 – 15%	20	19 – 100%	18 - 15%	32 – 15%	17	31 – 15%	33 – 15%	30 – 15%	34 – 15%
31	32	33	34	35	36	37	38	39	40
39	38	40	37 – 100%	41	29	28	36	27	26
41	42	43	44	45	46	47	48	49	50
35	44	43	42	45	46	47	49	48	50
51	52	53	54						
51	52	53	54						

NOTE! Blocks are defined as **80%** completed when ready to put on slipway - **100%** when positioned on slipway.

General comments:

- Progress – ref. master plan – rev 02
 - Lofting and production documentation delivery is according to schedule.
 - Fabrication of block 03 & 16 almost 3 weeks behind plan, remaining blocks only slightly behind.
 - Thruster delivery and installation of Azimuth according to plan – expect some delay for fwd. thruster installation.
 - Other equipment delivery: Chiller units, purifiers etc. arrived in warehouse
 - Prefab of bottom tank piping in blocks 05 & 06 started according to plan.
- MAK gen set delivery:
 - Due to resonance problem, TSI/MAK has concluded to do some that modifications (strengthening) of the upper bed frames for the sets. Tests with these modifications are planned for June 8th & 9th.
- Steel work quality good, some punches for improved grinding and finish, but good respond from yard for rectification

6 Blocks assembled on slipway



BL 11 ready for slipway



BL 16 - Bow section - progressing



Stern thruster on site



Azimuth thruster installed



View fwd. - from tank top in engine room area



Fwd part of sewage treatment plant room

Stairway to tween dk #78

Door to Lab 21